

# *Commercial Heat Pump Water Heating Systems*



DESIGNED ★ ENGINEERED ★ ASSEMBLED

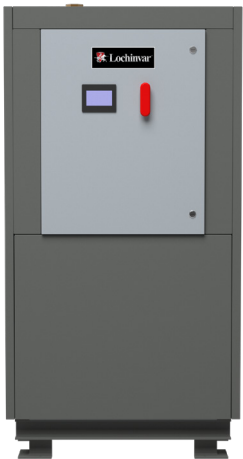
**USA**



**Lochinvar®**

For more information visit [Lochinvar.com](http://Lochinvar.com)

# Modular Source Heat Pump



- Up to 160°F max water temperature
- Heating capacity from 278,000 BTUH to > 1,300,000 BTUH
- 664 to 3,319 gallons per hour recovery rates\*\*
- Absorbs heat from water sources including return chiller water, process and ground water.
- Environmentally friendly, low GWP R513A refrigerant
- Double wall condenser for potable water heating
- BACnet compatible logic controller optional

The Lochinvar MHP Heat Pump Series is a zero emissions, high-efficiency modular water-to-water heat pump water heater. With five models ranging in heating capacity from 278,000 BTUH to over 1,300,000 BTUH generating from 664 to 3,319 gallons of hot water per hour, the Lochinvar MHP Heat Pump offers large scale, environmentally friendly water heating solutions for even the largest projects.

Model Number	Heating Capacity * (BTUH)	Length	Width	Height
MHP0270R	278,800	32-1/4"	39"	66-1/4"
MHP0540R	557,600	77-3/4"	39"	74-1/4"
MHP0810R	836,400	110-1/8"	39-1/4"	74-1/4"
MHP1080R	1,115,200	142-1/2"	39-1/4"	74-1/4"
MHP1350R	1,394,000	174-3/4"	39-1/4"	74-1/4"

\*Nominal DOE Capacity

\*\* 80°F source 100% water, DHW 50 EWT 140 LWT

# Water Source Heat Pump



- Up to 160°F max water temperature
- Heating capacity from 137,000 BTUH to 201,000 BTUH
- 233 to 343 gallons per hour recovery rates\*\*
- Absorbs heat from water sources including process and ground water.
- Environmentally friendly, low GWP R513A refrigerant
- Double wall condenser for potable water heating
- Integrated potable water approved pump
- BACnet compatible logic controller optional

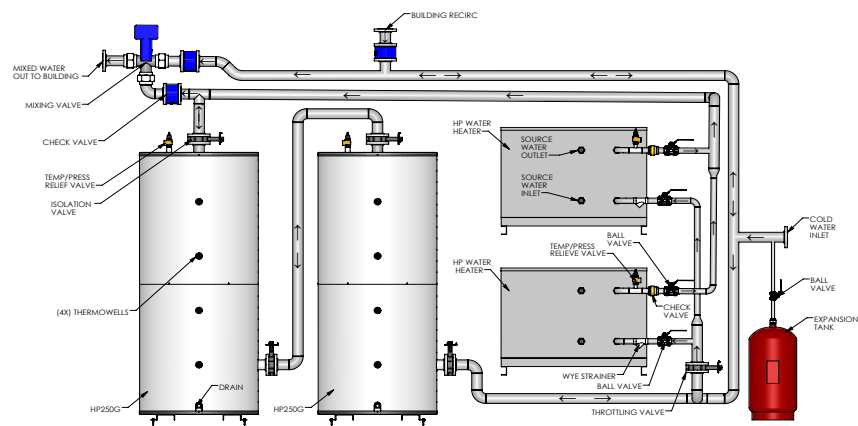
The Lochinvar WHP Heat Pump Series is a zero emissions, high-efficiency water-to-water heat pump water heater that can be configured to meet design specifications. With two models ranging in capacity from 137,000 BTUH to 200,000 BTUH, generating from 233 to 343 gallons of hot water per hour, the Lochinvar WHP Heat Pump provides an environmentally friendly solution to your hot water needs.

Model Number	Heating Capacity * (BTUH)	Length	Width	Height
WHP125R	137,160	52"	31"	40"
WHP185R	201,940	52"	31"	40"

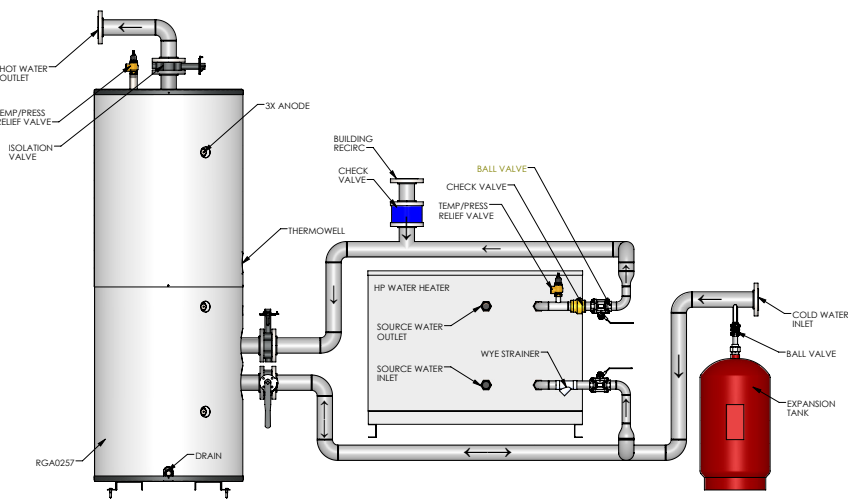
\*Nominal DOE Capacity

\*\* 80°F source 100% water, DHW 50 EWT 140 LWT

# Single-Pass



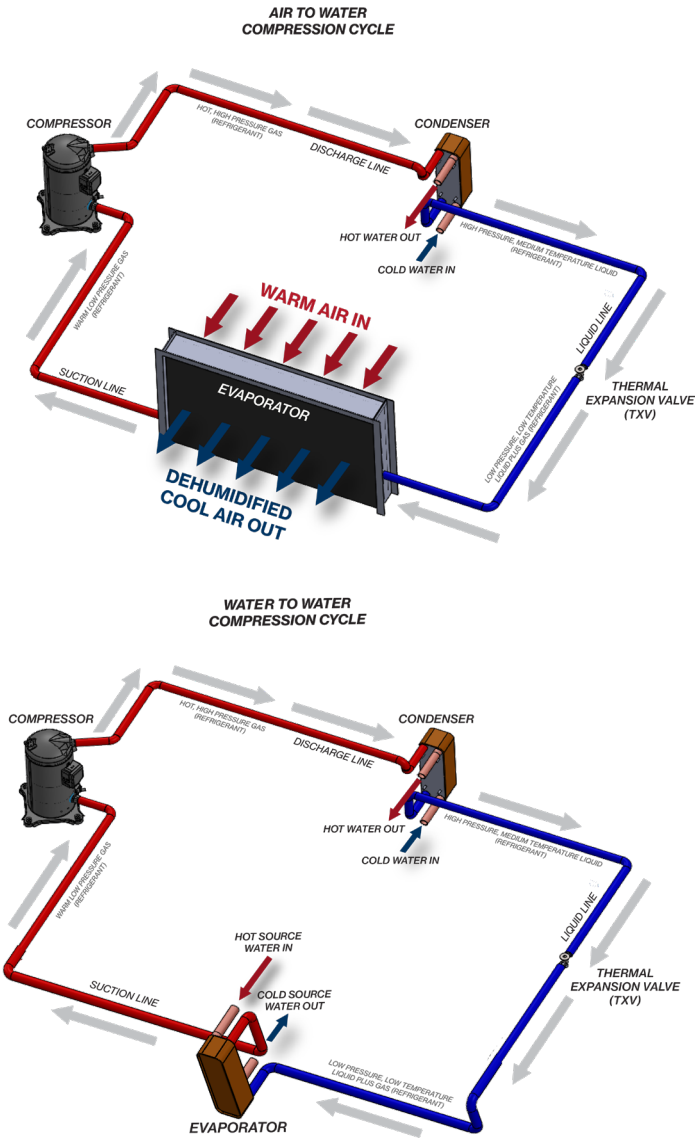
# Multi-Pass



Consult factory for option compatibility.

For complete product details please visit [Lochinvar.com](http://Lochinvar.com)

## How it works



It cost less to move heat than to create heat. Lochinvar commercial water source heat pumps are designed to be an energy efficient, zero emissions solution for your water heating needs.

The image above illustrates a basic refrigeration cycle that is used in our heat pump water heaters. Based on the unit selected, the system in your heat pump may be more elaborate, but the basic principles apply.